



LEHRY VALVES

Where flow and Pressure Meet Quality



CERTIFICATES



INTRODUCTION

Lehry Valves is a manufacturing company that has been a part of the industry for over seven decades now, with offices in all major metros across India with overseas offices in Sri Lanka, Qatar, UAE (United Arab Emirates) and the USA, with state-of-the-art Automatic Manufacturing Facilities in India. We are the first company to set up a Greenfield Platinum-rated manufacturing facility in India, located at Gummidipoondi to produce non-ferrous & Lead-Free Valves.

We are a manufacturer and solution provider of Mechanical valves and Automated Utility Management Systems for MEP services in the infrastructure & water services field. Our core portfolio is wide and consists of warehouses, data centres, hospitality, commercial buildings & workspaces, high-rise infrastructure, heavy infrastructure such as tunnels, roads, metros, airports etc. We cater to a wide array of industries as well such as Food & Pharma, Sugar, Paper, Cement, Oil & Gas and the like.

We specialize in the manufacturing of green, lead free and sustainable valves best suited for plumbing and drinking water applications. We also manufacture high-grade resilient valves that are guaranteed to function under the direst situations in Firefighting. Our smart water solutions arm provides water conservation solutions through automation that help curb consumption through accurate data measurements and IOT systems for water management. Our Valves go through an intense R&D Phase before production so they perform & function with great accuracy especially for HVAC systems.

We cater to a large audience such as Builders, Architects, Design & Costing Consultants, Contractors and many other OEM manufacturers who take advantage of our in-house Design and R&D facility to produce products best suited to enhance the performance of their products / systems. We boast a large variety of certifications - both National and International, approvals from Local Government bodies such as BIS & ISI, international approvals such as **FM**, **UL**, **NSF**, and **CE**

Some of our Prestigious Clientele



SL No.	Particulars	Page No
Ball Valve		
1	Forged Brass Lead Free Ball Valve Screwed End	01
Test & Drain Valve		
2	Forged Brass Test & Drain Valve Screwed End	02
Butterfly Valve		
3	DI Butterfly Valve Wafer End - 300 Psi	03
4	DI Butterfly Valve Grooved End - 300 Psi	04
Gate Valve		
5	DI OS&Y Type Gate Valve Flanged End - 300 Psi	05
6	DI OS&Y Type Gate Valve Grooved End - 200 Psi	06
7	DI OS&Y Type Gate Valve Grooved End - 300 Psi	07
8	DI NRS Type Gate Valve Flanged End - 300 Psi	08
9	DI NRS Type Gate Valve Grooved End - 200 Psi	09
Indicator		
10	Vertical Type Post Indicator	10
Check Valve		
11	DI Swing Check Valve Flanged End - 300 Psi	11
12	DI Swing Check Valve Grooved End - 300 Psi	12
ACV Pressure Relief Valve		
13	DI Automatic Pressure Relief Valve Flanged End	13 & 14



- ★ Largest Range of FM Approved & UL Listed Valves
- ★ Pan India Presence of a Technical Team
- ★ Country - Wide Support with Licenced Plumbers and Service Engineers
- ★ Valve Size & Selection Provided

FORGED BRASS LEAD FREE BALL VALVE

LEHRY MAKE FM-Approved & Lead Free Forged Brass Ball Valve Screwed End, a first in India, is best suited for use in drinking water and domestic water lines. With virtually zero* lead content, the product guarantees no leeching of harmful lead or nickel into the water that would otherwise be harmful for human consumption. #Saynotolead

Features :

- Female/Female threads.
- Flat lever handle with dacromet plated for Anti Rust properties.
- C46500 Lead Free Forged Brass with less than 0.25% lead content.
- Minimum and maximum working temperatures: -20°C, 120°C in absence of steam.
- Threads ISO228 (equivalent to DIN EN ISO 228 and BS EN ISO 228).

Working Pressure :

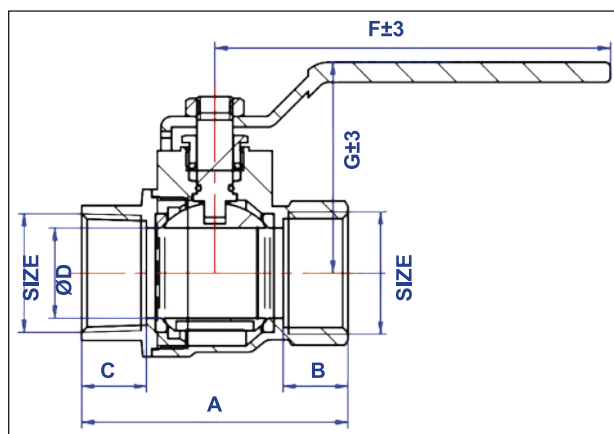
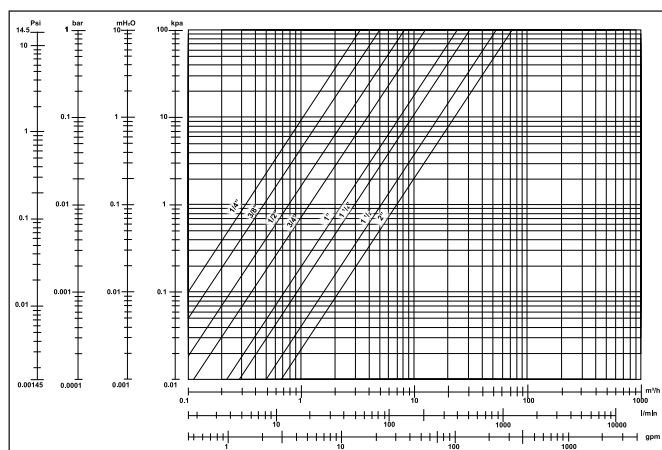
- Size: 8mm to 25mm : PN 30 Bar
- Size: 32mm to 50mm : PN 25 Bar

Specification

SL	DESCRIPTION	MATERIAL
1	Hex Nut	Steel Decromet Plated to prevent corrosion
2	Handle	Steel Decromet Plated to prevent corrosion
3	Packing Nut	Cu-Alloy
4	Packing Gland	PTFE
5	O-Ring	EPDM
6	Stem	1/2" - 3/4" Forged Brass (C46500) 1" - 2" Forged Brass (C36000)
7	Body	C46500
8	Seat	PTFE
9	Ball	1/4" - 1" Forged Brass (C46500) / 1-1/4" - 2" (SS304)
10	Bonnet	C46500

Typical Chemical Composition of Lead Free Brass Valves

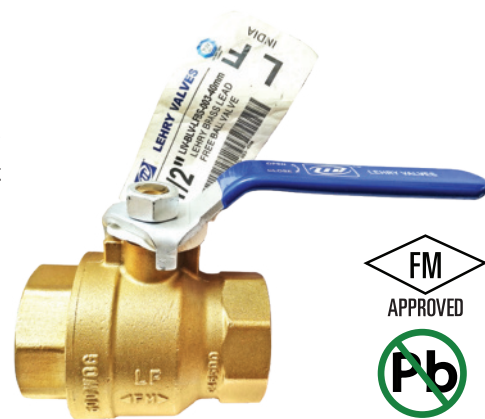
Standard	CU	Al	Sn	Ni	As	Pb	Fe	Zn	Ot.e
C46500	62	0	1	0	0.06	0.2	0.1	Balance	0.4



Dimensions

All Dimensions are in mm

Size	DN	A	B	C	ØD	F	G
1/4"	8	44.5	11.5	11.5	10	81	36
3/8"	10	44	11.5	11.5	10	81	36
1/2"	15	55	15	15	14.5	95	42.2
3/4"	20	62.4	15.5	15.5	19	95	48.2
1"	25	74	18	18	25	110	58.5
1-1/4"	32	86	19	19	32	130	68.5
1-1/2"	40	95.2	19.3	19.3	39	130	68.5
2"	50	109	20	20	49.5	161	88.5



LIV-BLV-LFBS-003

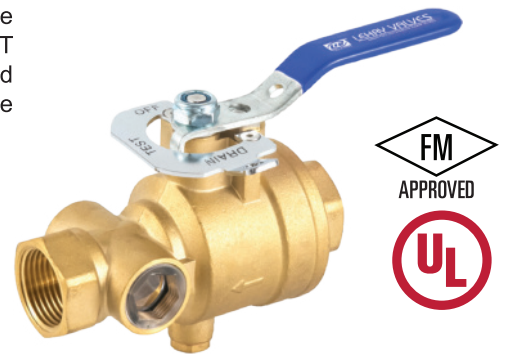


TEST & DRAIN VALVE

LEHRY MAKE Test and drain valves are compact 3-position ball valves with drain orifice having k-factor 5.6 or 4.2 (optional) and a sight glass. 3- positions consists of OFF-TEST and DRAIN. Model LIV90 has NPT end connection while LIV91 comes with grooved end connection ends. LIV90 & LIV91 come in Brass ASTM B584 material of construction. These have integral tamper resistant sight glass.

Valve Operating :

- To Test:
Turn valve handle counter-clockwise from OFF to TEST.
After test is completed, Return handles to OFF.
- To Drain:
Turn valve handle counter-clockwise from OFF to DRAIN.
After test is completed, Return handle to OFF



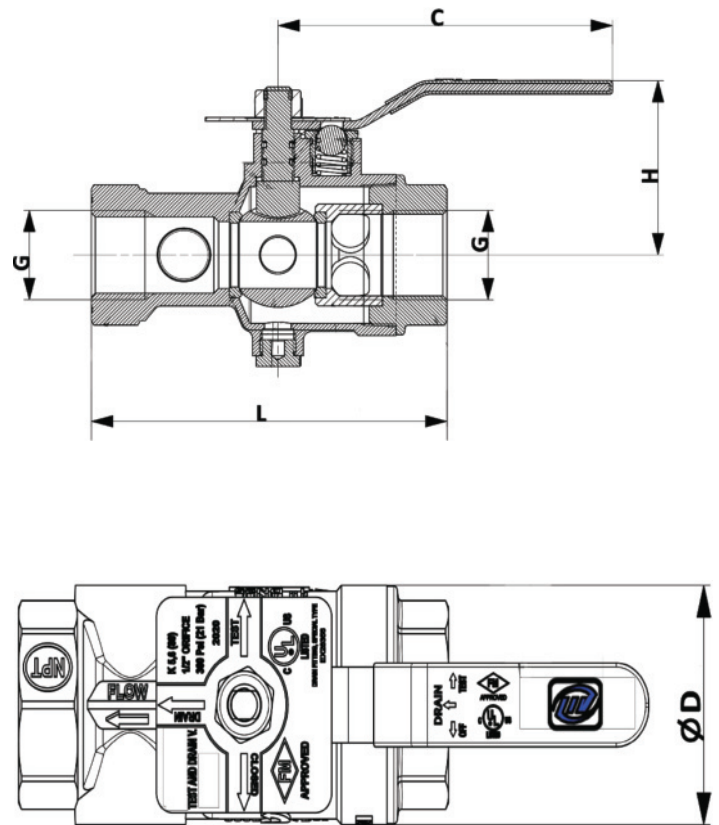
LIV-TDV-BS-001

Technical Data

- Size : 1" , 1-1/4" , 1-1/2" , 2"
- Working Pressure: 300 Psi
- Connection : NPT / BSPT
- K - Factor : 5.6
- Approval : UL - Listed & FM Approved

Specification

Parts	Material
Body	CW617N Brass
Bonnet	CW617N Brass
Stem	AISI 304
Bonnet Extension	CW617N Brass
Ball Seat	PTFE
Ball	CW617N Brass
Stem Seal	PTFE
O-Ring	EPDM
Sight Glass	CLEAR PVC
Sight Glass Gasket	EPDM
Lever	ST37 Steel + Vinly Coated
Nut with Fiber	Mild Steel with Decromet Plated to prevent Corrosion
Bearing Ball	C-1040
Bearing Ball Center	AISI 304
Spring	AISI 302
Label	AISI 304



Working Pressure	300 Psi		
Temperature	0 - 120°C		
Nominal Size	DN	25-32	40-50
Valve Dimensions	G	1" - 1 1/4"	1 1/2" - 2"
	L	133	173
	C	126	156
	H	65	84
	D	60	92
Weight	Kg	1.4 / 1.3	3.5 / 3

BUTTERFLY VALVE WAFER TYPE - 300 Psi

LEHRY MAKE **UL & FM** Approved Wafer Type Butterfly Valves are made to the highest quality standards for use in firefighting applications. These Valves can be integrated with a consistent range to create complete flow control packages. Versatile ranges of resilient seated multiturn butterfly valves are available in various configuration and materials to match critical applications. Higher end quality inspection ensures 100% compliances of safety measures, specified pressure rating and each valve assures tight shut-off

Features :

- No pins between shaft and disk connection; this eliminates the possibility of electrolytic corrosion
- Self-lubricated plain bearings for both drive and non-drive end shaft ensures minimum bearing friction torque
- Extended stem design for insulated line.
- Excellent adaptability for actuator operation through standardized ISO 5211 flange mounting dimensions for actuator fitment.

Applications.

- General Circuit water industries
- Flow Shut Off or Regulating Function in sectors including water supply of Fire Fighting's

Technical Specification

- Max. Working Pressure: 300 Psi (Max. Test Pressure: 450 Psi)
- Max. Working Temp.: 250°F (120°C)
- Application: Indoor and Outdoor use
- Double – Seal Disc: Resilient EPDM Coated
- Factory Installed Supervisory Tamper Switch Assembly

Material Specification

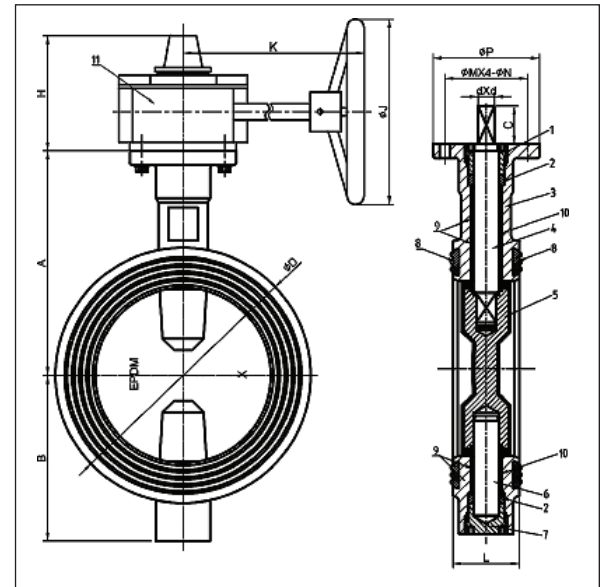
S.No.	Parts	Material
1	Upper Shaft Sealing Nut	WCB
2	Shaft Seal	EPDM
3	Body	DI (ASTM A536)
4	Upper Shaft	SS416
5	Disc	DI+EPDM
6	Lower Shaft	SS416
7	Lower Shaft Sealing Nut	WCB
8	Stem Bushing	PTFE
9	O-Ring	EPDM
10	Gear Box	DI



LIV-BFV-DI-DFM-001

Technical Standard

Design Standard	API609
Face to Face Standard	ASME B16.10
Top Flange Standard	ISO 5211
Test Standard	API 598



Dimensions

All Dimensions are in mm

Size		A	B	C	D	H	K		J	P	M	N	D	L
Inch	MM													
2	50	110	85	32	100	111	153	218	152	90	70	9	10	42
2 ½	65	125	95	32	112	111	153	218	152	90	70	9	10	44.2
3	80	140	100	32	120	111	153	218	152	90	70	9	11	45.3
4	100	160	100	32	161	111	153	218	152	90	70	9	14	52
5	125	170	125	32	182	111	153	218	152	90	70	9	14	54.4
6	150	190	140	32	216	111	153	218	200	90	70	9	16	55.8
8	200	230	175	32	260	126	210	232	300	125	102	12	19	60.5
10	250	260	200	45	320	126	210	232	300	125	102	12	24	66.5
12	300	300	240	45	375	161	249		350	150	125	14	26	76.9

BUTTERFLY VALVE GROOVED END - 300 Psi

LEHRY MAKE **UL & FM** Approved Grooved Butterfly Valves are made to the highest quality standards in the industrial applications. These Valves can be integrated with a consistent range to create complete flow control packages. Versatile ranges of resilient seated quarter turn butterfly valves are available in various configuration and materials to match critical applications. High end quality inspection ensures 100% compliances of safety measures, specified pressure rating and each valve assures thigh shut-off.

Features :

- Self-lubricated plain bearings for both drive and non-drive end shaft ensures minimum bearing friction torque
- Extended stem design for insulated line.

Applications.

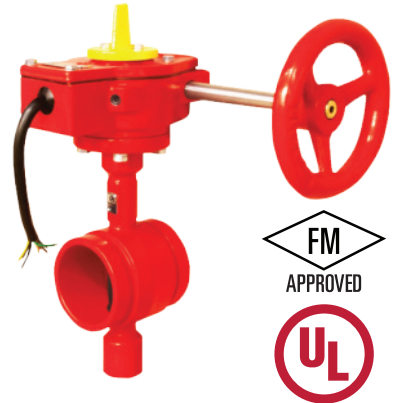
- General Circuit water industries
- Flow Shut Off or Regulating Function in sectors including water supply of Fire Fighting's

Technical Specification

- Max. Working Pressure: 300 Psi (Max. Test Pressure: 450 Psi)
- Max. Working Temp.: 250°F (120°C)
- Application: Fire Fighting Industrail & High Pressure Application
- Double – Seal Disc: Resilient EPDM Coated
- Factory Installed Supervisory Tamper Switch Assembly
- Grooved Standard : AWWA C606

Material Specification

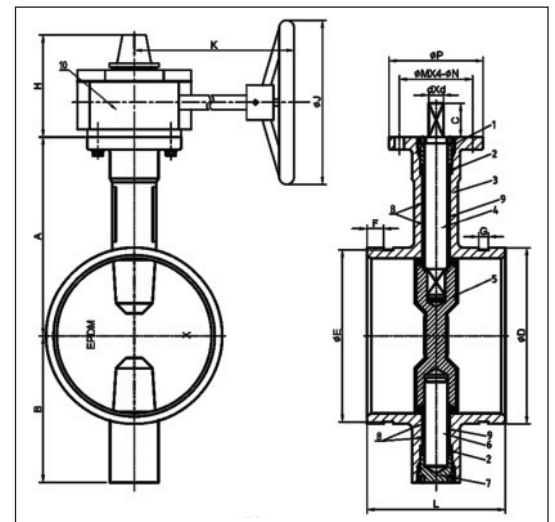
S.No.	Parts	Material
1	Upper Shaft Sealing Nut	WCB
2	Shaft Seal	EPDM
3	Body	DI (ASTM A536)
4	Upper Shaft	SS416
5	Disc	DI+EPDM
6	Lower Shaft	SS416
7	Lower Shaft Sealing Nut	WCB
8	Stem Bushing	PTFE
9	O-Ring	EPDM
10	Gear Box	DI



LIV-BFV-DI-DFM-006

Technical Standard

Design Standard	API609
Face to Face Standard	ASME B16.10
Top Flange Standard	ISO 5211
Test Standard	API 598



Dimensions

All Dimensions are in mm

Size		A	B	C	D	E	F	G	H	K		J	P	M	N	D	L
Inc	MM																
2	50	110	85	32	60.3	57.15	15.9	7.9	111	153	218	152	90	70	9	10	88
2 ½"	65	125	95	32	73	69.1	15.9	7.9	111	153	218	152	90	70	9	10	96.4
					76.1	72.3											
3"	80	140	100	32	88.9	84.9	15.9	7.9	111	153	218	152	90	70	9	11	97
4"	100	160	100	32	114.3	110.1	15.9	9.5	111	153	218	152	90	70	9	14	115.1
5"	125	170	125	32	139.7	135.5	15.9	9.5	111	153	218	152	90	70	9	14	132.4
					141.3	137											
6"	150	190	140	32	165.1	160.9	15.9	9.5	111	153	218	200	90	70	9	16	132.4
					168.3	164											
8"	200	230	175	32	219.1	214.4	19	11.1	126	210	232	300	125	102	12	19	147.4
					216.3	211.6											
10"	250	260	200	45	267.4	262.6	19	12.7	126	210	232	300	125	102	12	24	159
					273	268.3											
12"	300	300	240	45	318.5	312.9	19	12.7	161	249	350	150	125	14	26	165	
					323.8	318.3											

OS&Y GATE VALVE FLANGED END - 300 Psi

LEHRY MAKE **UL & FM** Approved OS&Y Type Gate Valve Flanged end are suitable for water are Coated with Epoxy resin.

Features :

- Body, Bonnet, and wedge made of high strength ductile iron per ASTM A536 65-45-12.
- The Interior and exterior of the valves are fusion bond epoxy coated.
- Each valve is equipped with a hand-wheel that indicates direction of opening.
- Packing is constructed of high quality graphite.
- Operating stems are made of Stainless steel.
- Wedge nuts are made of AISI 304 stainless steel.
- Flanged ends are in accordance with ASME/ANSI B16.42 Class 150



LIV-GTV-DI-DFM-002

Applications:

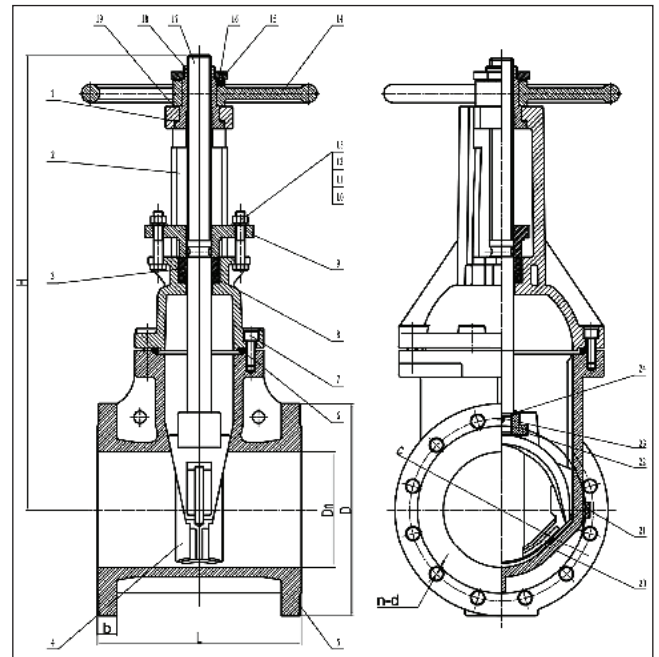
- General Circuit water industries
- Flow Shut Off or Regulating Function in sectors including water supply of Fire Fighting's

Technical Specification

- Design Standard : AWWA C509
- Max. Working Pressure: 300 Psi (Max. Test Pressure : 450 Psi)
- Application : Indoor and Outdoor Use
- Face to Face Standard : ASME B16.10
- Electrostatic spraying Both Inside & Outside of the Body

Material Specification

SL No	Parts	Material
1	Gasket	C95400
2	Bonnet	DI (ASTM A536)
3 & 8	Packing	Graphite
4	Disc	EPDM + DI
5	Body	DI (ASTM A536)
6	Sealing Ring	EPDM
7 & 12	Bolt	Steel
9	Gland	DI (ASTM A536)
10,11 & 13	Nut, Flat Washer & Spring Washer	Steel
14 & 20	Hand Wheel & Skeleton	DI (ASTM A536)
15 & 18	Lock Nut & Stem Nut	C95400
16 & 17	Locationg Screw & Stem	SS.304
19 & 21	Gasket & Plug	C95400
22	Lifting Nut	CF8M
23	Pin	SS304
24	Sealing Ring	EPDM



Dimensions

All Dimensions are in mm

Size	Inc MM	2 ½"	3"	4"	5"	6"	8"	10"	12"
		65	80	100	125	150	200	250	300
L		190	203	229	254	267	292	330	356
D		190	210	255	280	320	380	445	520
C		149	168	200	235	270	330	387	451
n-d		8-Ø22	8-Ø22	8-Ø22	8-Ø22	12-Ø22	12-Ø25	16-Ø29	16-Ø32
b		17.5	19.1	24	24	25.4	28.6	30.2	31.8
H		370	420	447	547	607	754	890	1031

OS&Y GATE VALVE GROOVED END - 200 Psi

LEHRY MAKE **UL & FM** Approved OS&Y Type Gate Valve Grooved End are suitable for water are Coated with Epoxy resin.

Features :

- Body, Bonnet, and wedge made of high strength ductile iron per ASTM A536 65-45-12.
- The Interior and exterior of the valves are fusion bond epoxy coated.
- Each valve is equipped with a hand-wheel that indicates direction of opening.
- Packing is constructed of high quality graphite.
- Operating stems are made of Stainless steel.
- Wedge nuts are made of AISI 304 stainless steel.
- Grooved End as per AWWA C606

Applications:

- General Circuit water industries
- Flow Shut Off or Regulating Function in sectors including water supply of Fire Fighting's

Technical Specification

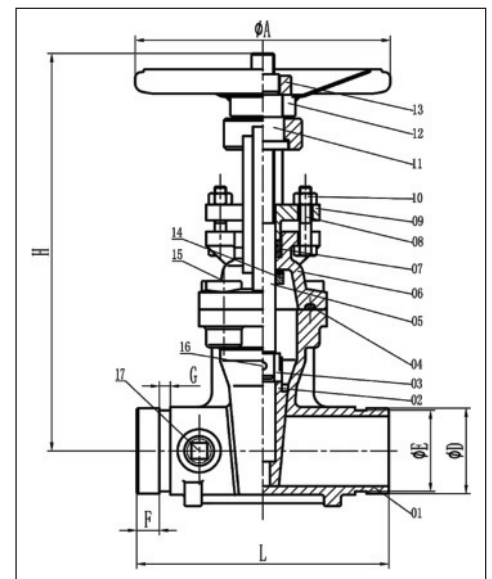
- Design Standard : AWWA C515
- Max. Working Pressure: 200 Psi (Max. Test Pressure : 300 Psi)
- Application : Indoor and Outdoor Use
- Face to Face Standard : ASME B16.10
- Electrostatic spraying Both Inside & Outside of the Body

Material Specification

SL No	Parts	Material
1	Body	DI (ASTM A536)
2	Disc	DI+EPDM
3 & 11	Connection Part & Rotation Nut	C95400
4	Sealing Pad	EPDM
5	Stem	SS 304
6 & 9	Cap & Platen	DI (ASTM A536)
7	Sealing Kits	PTFE
8 & 10	Bolt & Nut	Steel
12 & 13	Hand Wheel & Lock Net	Steel
14	Flat Key	SS.416
15 & 16	Countersunk Head Bolt &	Steel
17	Plug	C95400



LIV-BFV-DI-DFM-006



Dimensions

All Dimensions are in mm

Size	Inc MM	2"	2 1/2"	3"	4"	5"	6"	8"	10"	12"
L		178	190	203	229	254	267	292	330	356
H		313	340	387	440	546	607	786	946	1110
ØA		180	200	220	250	280	300	350	406	406
ØD		60.3	76.1	88.9	114.3	141.3	168.3	219.1	273	323.9
ØE		57.2	72.3	84.9	110.1	137	163.9	214.4	268.3	318.3
F		15.9	15.9	15.9	15.9	15.9	15.9	19	19	19
G		7.9	7.9	7.9	9.5	9.5	9.5	11.1	12.7	12.7

OS&Y GATE VALVE GROOVED END - 300 Psi

LEHRY MAKE **UL & FM** Approved OS&Y Type Gate Valve Grooved end are suitable for water are Coated with Epoxy resin.

Features :

- Body, Bonnet, and wedge made of high strength ductile iron per ASTM A536 65-45-12.
- The Interior and exterior of the valves are fusion bond epoxy coated.
- Each valve is equipped with a hand-wheel that indicates direction of opening.
- Packing is constructed of high quality graphite.
- Operating stems are made of Stainless steel.
- Wedge nuts are made of AISI 304 stainless steel.
- Grooved End as per AWWA C606



LIV-GTV-DI-DFM-008

Applications:

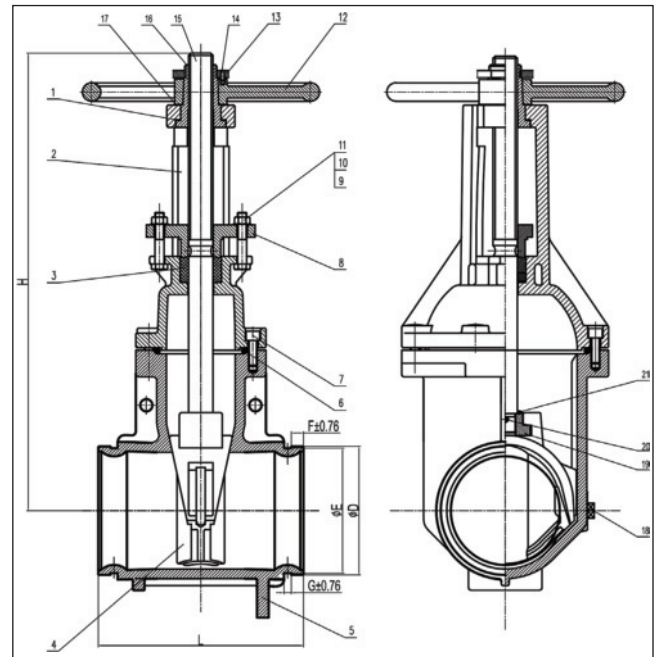
- General Circuit water industries
- Flow Shut Off or Regulating Function in sectors including water supply of Fire Fighting's

Technical Specification

- Design Standard : AWWA C515
- Max. Working Pressure: 300 Psi (Max. Test Pressure : 450 Psi)
- Application : Indoor and Outdoor Use
- Face to Face Standard : ASME B16.10
- Electrostatic spraying Both Inside & Outside of the Body

Material Specification

SL No	Parts	Material
1	Gasket	C95400
2	Bonnet	DI (ASTM A536)
3	Packing	Graphite
4	Disc	EPDM + DI
5	Body	DI (ASTM A536)
6	Sealing Ring	EPDM
7 & 11	Bolt	Steel
8	Gland	DI (ASTM A536)
9,10 & 14	Nut, Flat Washer & Locating Screw	Steel
12	Hand Wheel	DI (ASTM A536)
13,16 & 18	Lock Nut, Stem Nut & Plug	C95400
15 & 17	Stem & Gasket	SS.304
19	Lifting Nut	CF8 / CF8M
20	Pin	CF8
21	Sealing Ring	EPDM



Dimensions

All Dimensions are in mm

Size	Inc MM	2.5" 65	3" 80	4" 100	5" 125	6" 150	8" 200	10" 250	12" 300
L		190	203	229	254	267	292	330	356
F		15.9	15.9	15.9	15.9	15.9	19	19	19
D	76.1	88.9	114.3	141.3	168.3	219.1	273	323.9	
	73			139.7	165.1	216.3			
E	72.3	84.9	110.1	137	163.9	214.3	268.3	318.3	
	69.1			135.5	160.8	211.6			
G		7.9	7.9	9.5	9.5	9.5	11.1	12.7	12.7
H		370	420	447	547	607	754	890	1031

NRS GATE VALVE FLANGED END - 300 Psi

LEHRY MAKE **UL & FM** Approved Non-Rising Stem Gate Valve Flanged end are suitable for water are Coated with Epoxy resin.

Features :

- Body, Bonnet, and wedge made of high strength ductile iron per ASTM A536 65-45-12.
- Interior and exterior of the valves are fusion bond epoxy coated.
- Each valve is equipped with a hand-wheel that indicates direction of opening.
- Packing is constructed of high quality graphite.
- Operating stems are made of Stainless steel.
- Wedge nuts are made of AISI 304 stainless steel.
- Flanged ends are in accordance with ASME/ANSI B16.42 Class 150.



LIV-GTV-DI-NSR-NH-FM-002

Applications:

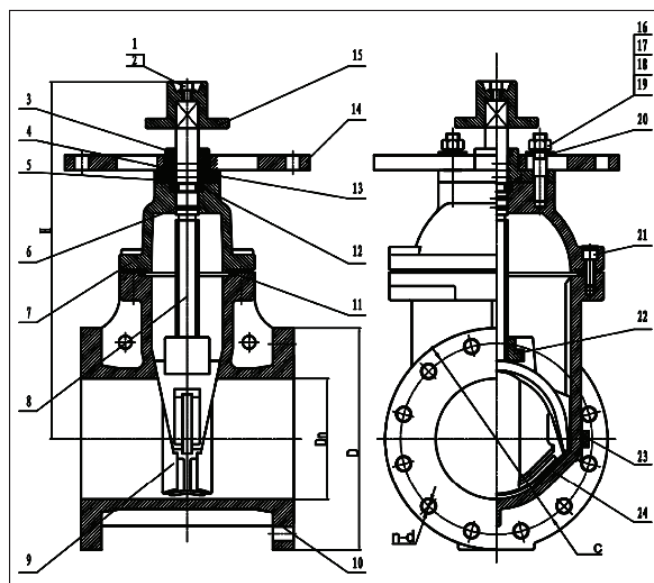
- General Circuit water industries
- Flow Shut Off or Regulating Function in sectors including water supply of Fire Fighting's

Technical Specification

- Design Standard : AWWA C515
- Max. Working Pressure: 300 Psi (Max. Test Pressure : 450 Psi)
- Application : Indoor and Outdoor Use
- Face to Face Standard : ASME B16.10
- Electrostatic spraying Both Inside & Outside of the Body

Material Specification

SL No	Parts	Material
1 & 2	Flat Washer & Inner Hexagon Screw	SS.304
3 & 5	Sealing Gland & Sealing Ring	EPDM
4 & 6	O-Ring	EPDM
7 & 10	Body & Bonnet	DI (ASTM A536)
8	Stem	SS 304
9	Disc	EPDM+DI
11	Sealing Ring	EPDM
12	Retaining Ring	C95400
13,14 & 15	Gland & Terminal Pad & Link Block	DI (ASTM A536)
16 & 17	Nut & Studs	SS 304
18	Spring Washer	Steel
19 & 20	Washer	Steel
21	Inner Hexagon Screw	Steel
22	Master Screw	C95400
23	Plug	C95400
24	Skeleton	DI (ASTM A536)



Dimensions

All Dimensions are in mm

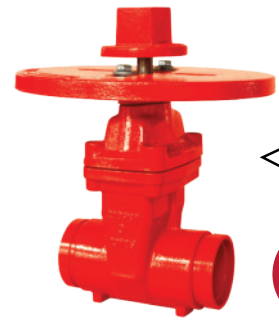
Size	Inc MM	2 ½"	3"	4"	5"	6"	8"	10"	12"
L		190	203	229	254	267	292	330	356
D		178	191	229	254	279	343	406	483
c		139.5	152.5	190.5	216	241.5	298.5	362	432
n-d		4-Ø19	4-Ø19	8-Ø19	8-Ø22	8-Ø22	8-Ø22	12-Ø25	12-Ø25
H		292	322	342	412	448	534	635	720

NRS GATE VALVE GROOVED END - 200 Psi

LEHRY MAKE **UL & FM** Approved Non-Rising Stem Gate Valve Grooved end are suitable for water are Coated with Epoxy resin.

Features :

- Body, Bonnet, and wedge made of high strength ductile iron per ASTM A536 65-45-12.
- Interior and exterior of the valves are fusion bond epoxy coated.
- Each valve is equipped with a hand-wheel that indicates direction of opening.
- Packing is constructed of high quality graphite.
- Operating stems are made of Stainless steel.
- Wedge nuts are made of AISI 304 stainless steel.
- Grooved Ends as per AWWA C606



LIV-GTV-DI-NSR-NH-FM-006

Applications:

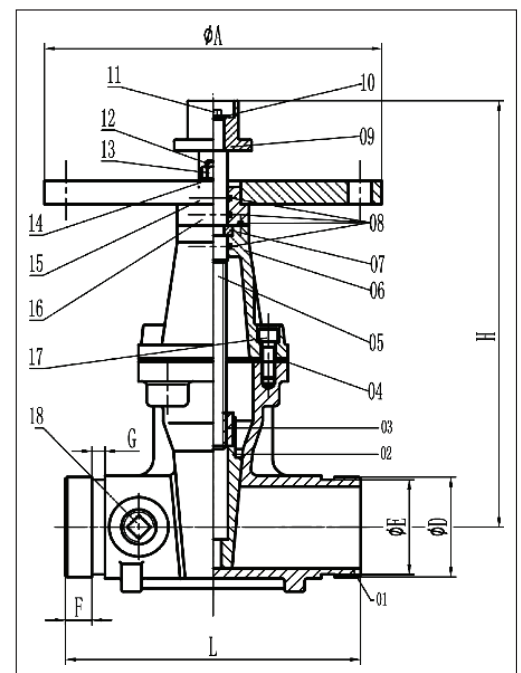
- General Circuit water industries
- Flow Shut Off or Regulating Function in sectors including water supply of Fire Fighting's

Technical Specification

- Design Standard : AWWA C515
- Max. Working Pressure: 200 Psi (Max. Test Pressure : 300 Psi)
- Application : Indoor and Outdoor Use
- Face to Face Standard : ASME B16.10
- Electrostatic spraying Both Inside & Outside of the Body

Material Specification

SL No	Parts	Material
1	Body	DI (ASTM A536)
2	Disc	DI+EPDM
3 & 7	Nut & Retainer Ring	C95400
4	Gasket	EPDM
5	Stem	SS 304
6 & 9	Cap & Scotch	DI (ASTM A536)
8	O-Ring	EPDM
10 & 11	Mini Pad & Bolt	Steel
12 & 13	Bolt Stud & Blind Stud	Steel
14	Plain Washer	Steel
15 & 16	Coupling Flange & Platen	DI (ASTM A536)
17	Countersunk Head Bolt &	Steel
18	Plug	C95400



Dimensions

All Dimensions are in mm

Size	Inc MM	2" 50	2 ½" 65	3" 80	4" 100	5" 125	6" 150	8" 200	10" 250	12" 300
L		178	190	203	229	254	267	292	330	356
H		264	289	326	355	410	455	558	648	745
ØD		60.3	76.1	88.9	114.3	141.3	168.3	219.1	273	323.9
ØE		57.2	72.3	84.9	110.1	137	163.9	214.4	268.3	318.3
F		15.9	15.9	15.9	15.9	15.9	15.9	19	19	19
G		7.9	7.9	7.9	9.5	9.5	9.5	11.1	12.7	12.7

VERTICAL TYPE POST INDICATOR

LEHRY MAKE **Non-FM** Approved Cast Iron Vertical posts are designed to operate the control valve of an automatic fire sprinkler system.

Features :

- Indicates if the valve is in the open or shut position.
- The indicator post provides a means to operate a buried or otherwise inaccessible valve.
- The adjustment range of the indicator post is 34.5" to suit the deeper buried valve and can be easily adjusted in the field.
- The wrench handle fits over a "U" bracket on the barrel, and may be fixed with a padlock to secure the operation wrench to the barrel.
- OPEN and SHUT targets can be easily adjusted to fit exactly in the viewing window.
- Internally and externally spray epoxy painted RAL3000

Field Adjustments

- Remove the top section of the upper barrel of the indicator post
- Cut the stem to the required length and adjust the standpipe to match up the GROUND LINE
- Set the OPEN and SHUT targets for the appropriate valve size
- Re-attach the top section of the upper barrel of the indicator post.

Installation Instructions

- Unload the upper cover of control lead
- Measure Control lead depth, remove the excess part of connector lead and driving rod
- Fit the control rod with full closed valve, turn the position plate to SHUT position
- Load upper cover

Material Specification

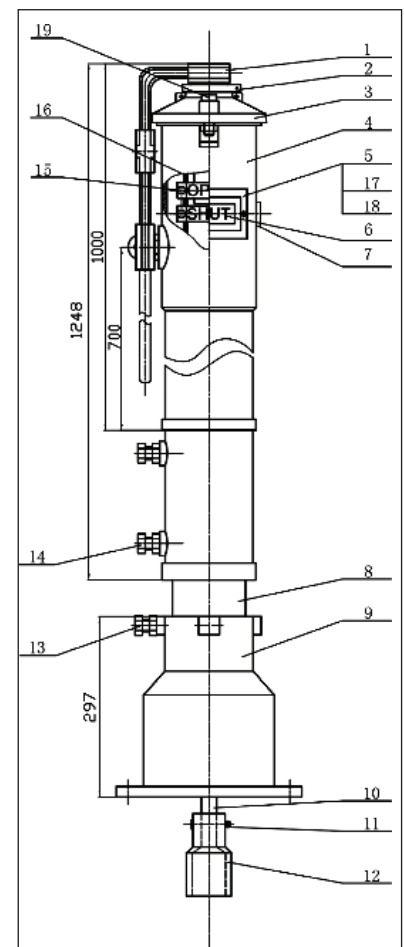
SL No	Parts	Material
1	Handle	DI (ASTM A536)
2	Driving Rod	SS.304
3	Indicator Cover	CI
4	Housing	CI
5	Keyhole Plate	A283 Gr.C
6	Indicator Plate	A413.0 (ASTM S12A)
7	Screwed Plug	1035 (ASTM A29)
8	Extension Rod	A283 Gr.C
9	Flange	CI
10	Connection Rod	1045 (ASTM A29)
11	Cotter Pin	1035 (ASTM A29)
12	Joint	CI
13,14 & 15	Bolt	1035 (ASTM A29)
16	Driving Nut	SS.304
17	Keyhole Plate Gasket	EPDM
18	Indicator Flap	Organic Glass
19	Bolt	1035 (ASTM A29)

Dimensions All are in mm

Size	ØH	H	A	F
All Sizes	297	1248	1000	700



LIV-VIP-GTV-NSR-RP-001



SWING CHECK VALVE FLANGED END - 300 PSI

LEHRY MAKE **UL & FM** Approved Swing Type Check Valve Flanged End are suitable for water, oil & Gas and coated with Epoxy resin

Features :

- Body, Bonnet, and wedge made of high strength ductile iron per ASTM A536 65-45-12.
- Interior and exterior of the valves are fusion bond epoxy coated.
- Packing is constructed of high quality graphite.
- Wedge nuts are made of AISI 304 stainless steel.
- Flanged ends are in accordance with ASME/ANSI B16.42 Class 150



LIV-CHK-DI-DFM-001

Applications:

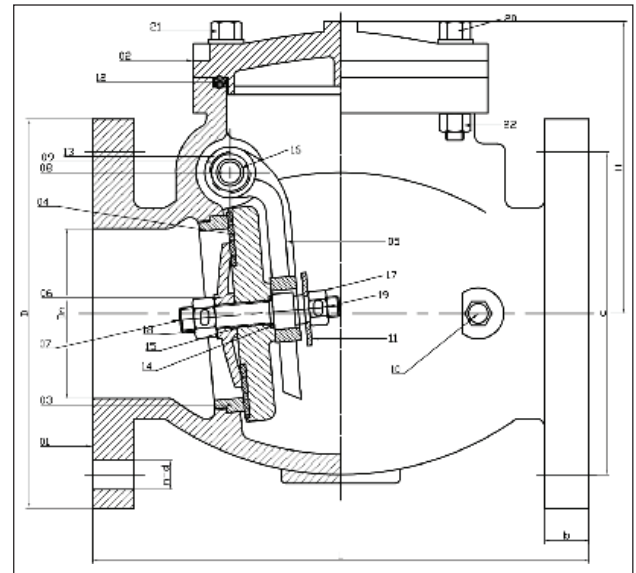
- General Circuit water, Gas & Oil industries

Technical Specification

- Design Standard : AWWA C508
- Max. Working Pressure: 300 Psi (Max. Test Pressure : 450 Psi)
- Application : Indoor and Outdoor Use
- Face to Face Standard : ASME B16.10
- Electrostatic spraying Both Inside & Outside of the Body

Material Specification

S.No	Parts	Material
1 & 2	Body & Bonnet	DI (ASTM A536)
3	Seat Ring	C95400
4	Disc	DI (ASTM A536)
5 & 6	Rocker Arm & Baffle Plate	DI (ASTM A536)
7 & 8	Middle Stem& Pinned Stem	SS 304
9 & 11	Bracket Screw & Gasket	SS 304
10	Plug	C95400
12,13,14 & 15	O-ring	EPDM
16	Bronze Bush	C95400
17 & 18	Outer Hexagon Nut M12	SS 304
19	Cotter Pin 4 x 55	SS 304
20	Outer Hexagon Bolt (Half Thread)	Stainless Steel
21	Outer Hexagon Bolt (Full Thread)	Stainless Steel
22	Zinc Outer Hexagon Nut	Stainless Steel



Dimensions

All Dimensions are in mm

Size	Inc MM	2"	2 ½"	3"	4"	5"	6"	8"	10"	12"
L		203	216	241	292	330	356	495	622	698
D		152	178	191	229	254	279	343	406	483
b		18	18.5	20.5	24.5	24	25	28	32	32
c		120.5	139.5	152.5	190.5	216	241.5	298.5	362	432
n-d		4-Ø19	4-Ø19	4-Ø19	8-Ø19	8-Ø22	8-Ø22	8-Ø22	12-Ø25	12-Ø25
H		142	148	163.5	172	237	233	301	348	419

SWING CHECK VALVE GROOVED - 300 PSI

LEHRY MAKE **FM** Approved Approved Swing Type Check Valve Grooved End are suitable for water, oil & Gas and coated with Epoxy resin

Features :

- Body, Bonnet, and wedge made of high strength ductile iron per ASTM A536 65-45-12.
- Interior and exterior of the valves are fusion bond epoxy coated.
- Packing is constructed of high quality graphite.
- Wedge nuts are made of AISI 304 stainless steel.
- Grooved End as per AWWA C606



Applications:

- General Circuit water, Gas & Oil industries

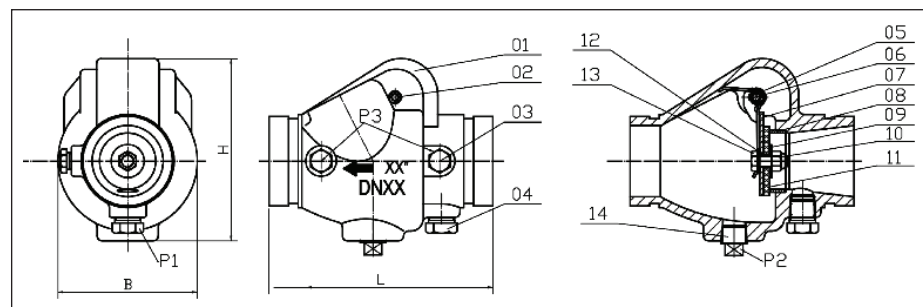
LIV-CHK-DI-DI-006

Technical Specification

- Design Standard : AWWA C606
- Max. Working Pressure: 300 Psi
- Temperature Range : 0°C - 100°C
- Coating: Fusion Bonded Epoxy Coating AWWA C550 or Painting upon request

Material Specification

SL No	Parts	Material
1	Body	ASTM A536
2,3 & 4	Plug	Steel
5	Spring	SS 304
6	Hing Ping	SS 304
7	Clapper	SS 304
8	Seat	C95400
9	Clamping Ring	SS 304
10	Locknut	SS 304
11	Facing Seal	EPDM
12	Gasket	EPDM
13	Bolt	SS 304
14	Plug	Steel



Dimensions

All Dimensions are in mm

Size		2"	2 ½"	3"	4"	5"	6"	8"
MM	Inc	50	65	80	100	125	150	200
B		100	104	128	151	189	220	279
H		131	141	166	195	223	252	303
L		169	181	198	214	248	270	325

ACV - PRESSURE RELIEF VALVE

LEHRY MAKE Pressure Relief Valve Installed on a by-pass line, mainline pressure is accurately controlled by relief of excess pressure. Installed in a mainline it prevents upstream pressure from exceeding a pre-set pressure.

Valve Function:

Maintain constant upstream pressure (inlet to valve) by relieving excess pressure

Features :

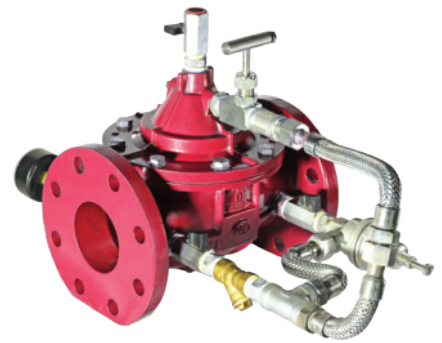
- Wide Range of Sizes
- Fused epoxy coating 100% inside and out side
- Diaphragm Actuated (One Moving Part)

Specifications:

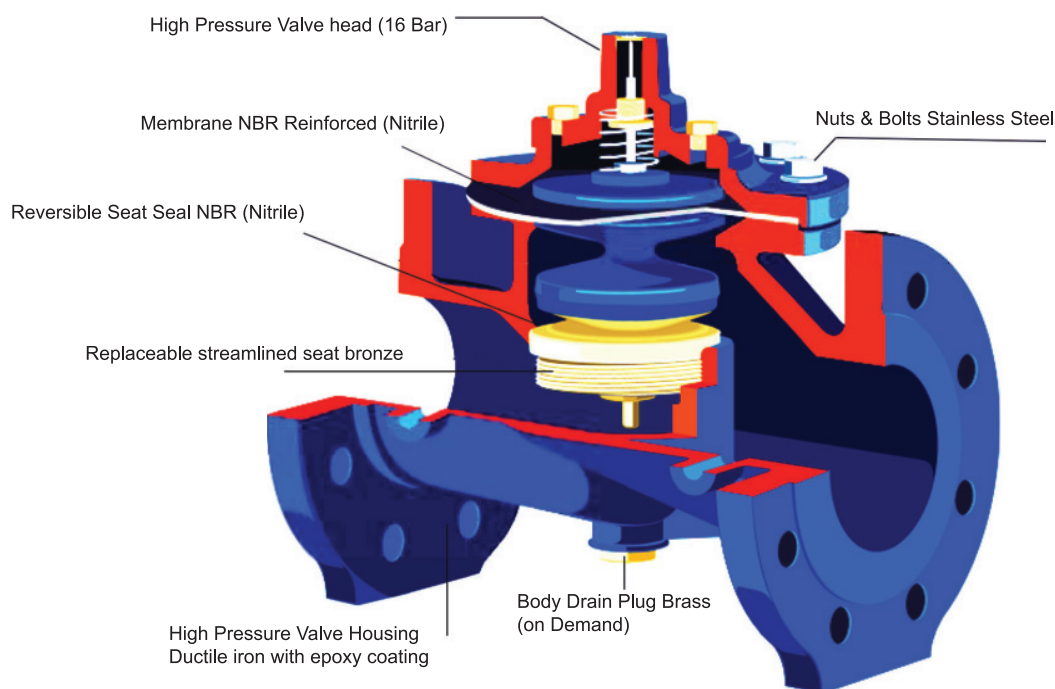
- Body & Cover : Ductile Iron (ASTM A536),
: Fused Epoxy Coated 100% Inside / Outside
- Seat : NBR (Nitrile)
- Stem : Stainless Steel - AISI 303
- Spring : Stainless Steel - AISI 302

Elastomers

- Diaphragm : Nylon reinforced + EPDM
- Pressure Rating : PN16 / PN25
- Design Standard : BS EN 1567
- Face to Face : EN558-1
- End Connection : Flanged to ANSI 150 / 300
- Size Range : 1 1/2" – 24" (DN40 - DN600)
- Max. Working Pressure : 90°C



LIV-ACV-PSV-DI-FE-003



Pilot System

1.5 – 6 bar (Low)
6 – 12 Bar (Standard)
12 – 18 Bar (High)

Tube & Fittings

SS / Copper / Brass (Std.)

Operation Pressure

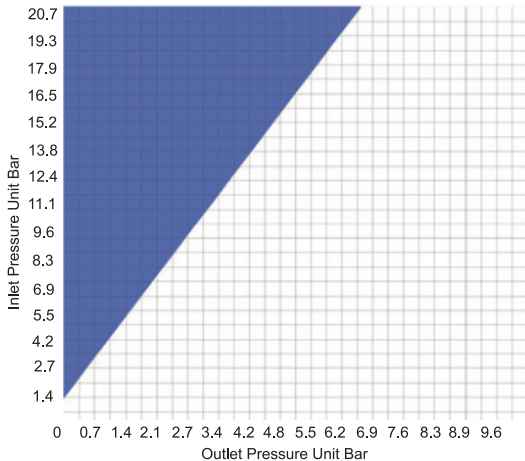
PN.16 Flanged: 17 Bar
150# Flanged: 21 Bar
300# Flanged: 28 Bar.

Operation Temperature

NBR: 80°C

ACV - PRESSURE RELIEF VALVE

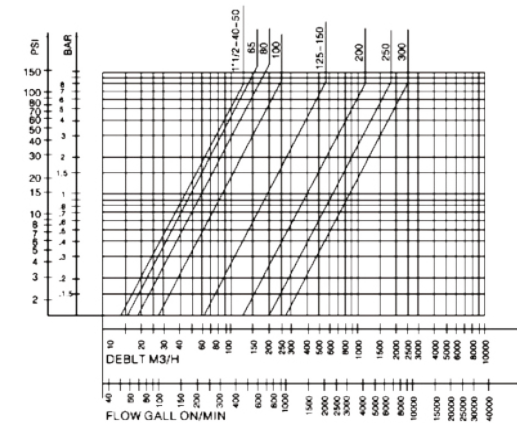
Cavitation Area



Flow Criteria

DN	Mini (M³/h)	Maxi (M³/h)
40	0.5	20
50	0.5	36
65	1.15	45
80	1.15	45
100	3.45	92
125	9.15	165
150	9.15	165
200	13.7	365
250	24.7	715
300	50.6	1001.2

Head Loss Chart



Technical Specification

Cavitation Guide Chart

After selecting the valve size, locate inlet and outlet pressure on this chart. If the intersection point falls in the shade area, cavitation can occur. Operation of valve continually in the cavitation zone should be avoided.

Anti-Cavitation Solution

The Anti-Cavitation mould is designed for applications where there is a high potential for damage from cavitation, which provides optimum internal pressure control through a unique anti-cavitation trim design.

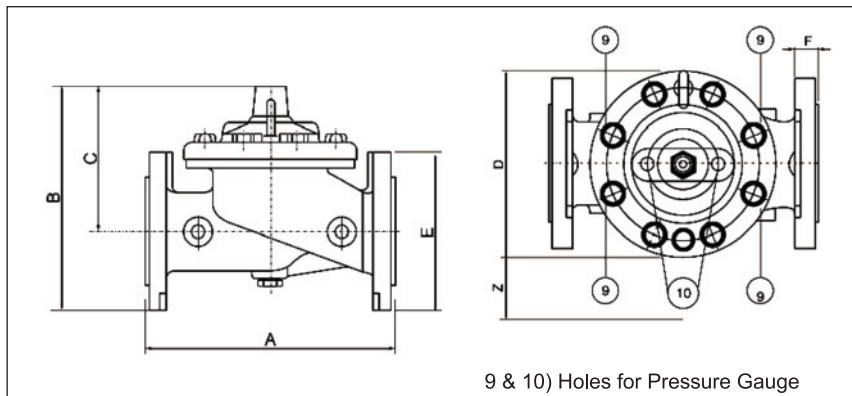
Relieving the damage of cavitation with multi-stage pressure reducing

KV: 15°C, 1 bar, (m³/h)

Quantity of flow (in m³/h) of water at 15°C passing through a device creating a head loss of 1bar

KV Value

Valve Size	M³/h	L/s
40-50	45.6	12.6
65	48.33	13.43
80	55.4	1.39
100	86.6	24.05
125	194.66	54.07
150	194.66	54.07
200	397.5	110.41
250	900	249.9
300	919.4	255.4



9 & 10) Holes for Pressure Gauge

Note: -

- Connection PN16-PN25 Flange drilling to be indicated when ordering. Threaded Connection on request ANSI-ASI drilling on request.
- Contact us for the vertical installation of control valves above DN200. & DN 350 an above.

Installations:-

- Flush the pipeline before inserting the valve Install the valve with the "arrow" on body pointing towards the reduced pressure area (or with the flange tagged "INLET) toward the high pressure are.)
- Attached subassemblies to main valve if necessary.
- Allow enough clearance above valve for removal of piston assembly.

Size		A	B	C	D	E	F	Z	NT WT (Kg) (Pn16 & 25)
DN	Inch								
40	1 1/2"	237	240	160	169.9	167	16	254	10.8
50	2"	243	240	160	169.9	167	16	254	14.6
65	2 1/2"	276	255	160	169.9	192	18	254	18.2
80	3"	276	255	160	169.9	200	18	254	18.2
100	4"	306	315	205	205	233	24	254	33
125	5"	416	370	240	279.5	250	25	254	58.5
150	6"	416	380	240	279.5	283	26	254	61.7
200	8"	520	490	330	363	345	28	254	97.4
250	10"	755	690	490	479.5	410	33	254	302.5
300	12"	764	720	490	693	480	34	254	322.5

OUR NETWORKS



North America



Factories

- Chennai
- Jalandhar



Offices

- Head Offices
- Chennai
- Branches
- Mumbai
- Bangalore
- Kolkatta
- Hyderabad



Warehouse

- Chennai
- Mumbai



International Offices

- UAE, QATAR, SAILANKA & USA

Distributors

- Aurangabad
- Bangalore
- Chennai
- Delhi
- Goa
- Gurugram
- Hyderabad
- Indore
- Kochi
- Madurai
- Mangalore
- Mumbai
- Nagpur
- Pune
- Ponidcherry
- Trichy
- Vadodara
- Vizag

Contact us.

For Enquires : marketing@lehryvalves.com

For Interest in Partnership / Dealership : sanjay@lehryvalves.com

For Services request / complains : servicesupport@lehryvalves.com

Lehry Interactive Valve Experience Studio :-

G-132, Phase-III, Spencer Plaza, Anna Salai, Chennai - 600 002.



Scan the Qr code to
View Distributors



MANUFACTURING UNIT

Non - Ferrous Products

Chennai

C-2 Sipcot Industrial Estate main road, Gummidipoondi, Thiruvallur- 601 201.

Ferrous Products

Jalandhar

Wariana Ind. Complex, Sangal Sohal Road, Jalandhar - 144 013

OFFICES :

Headquarters

New No. 78/ Old No.51, Sembudoss Street, P.B. No. 1506. Parrys, Chennai - 600 001

Phone : 044 - 42510000. Email : info@lehryvalves.com

LIVE STUDIO ADDRESS

LIVE Studio

Spencer Plaza, Phase - III, Ground Floor, Shop No. G-132, 768-769, Anna Salai, Chennai - 600 002

Phone : 044 - 42510003.

Mumbai

37/38, 1st Floor, The Empire Building, Dr D N Road, Fort, Mumbai - 400 001

Phone : 044 - 42510031, Email : mumbai@lehryvalves.com



Follow us our Social Sites